



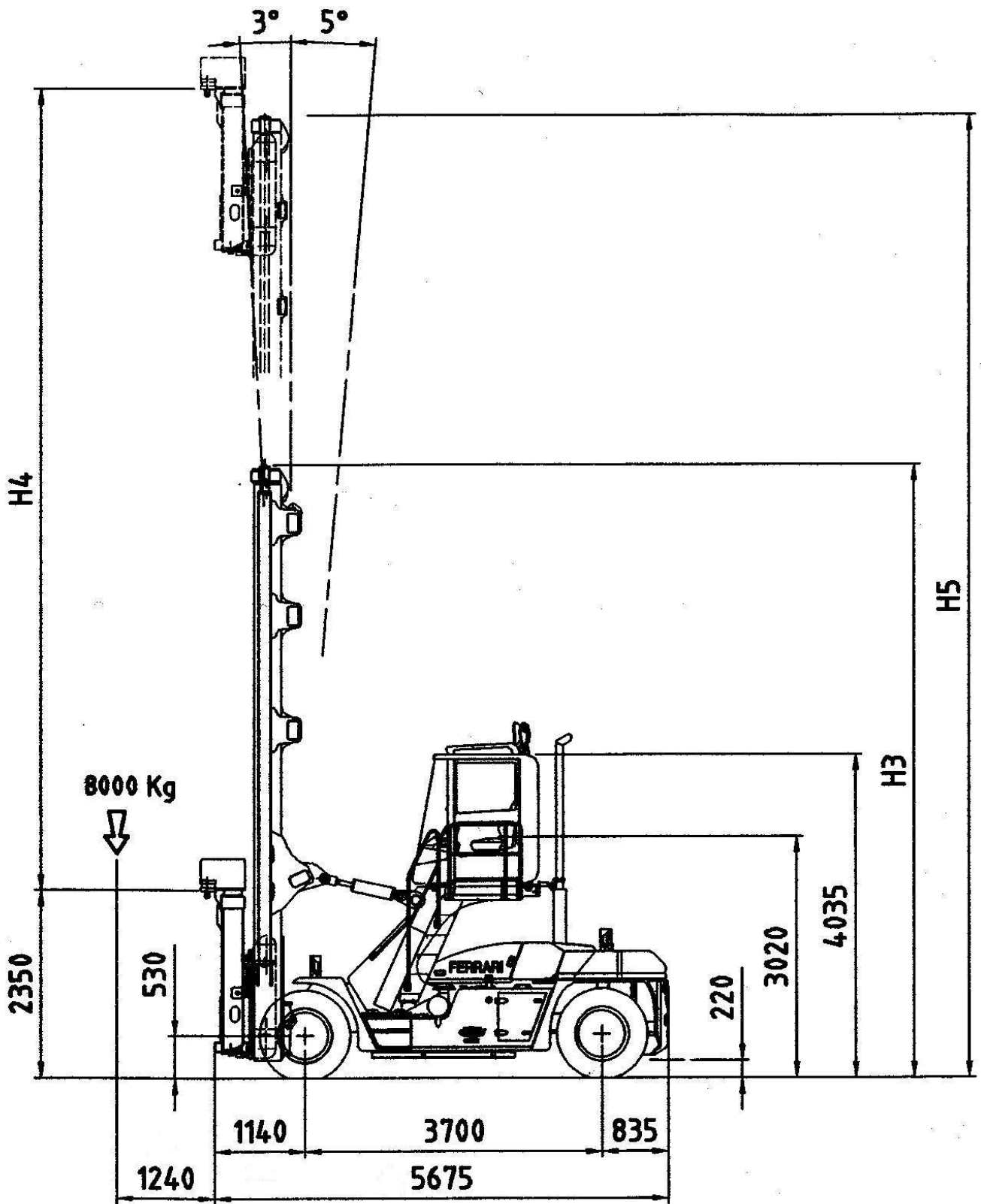
Technical Information

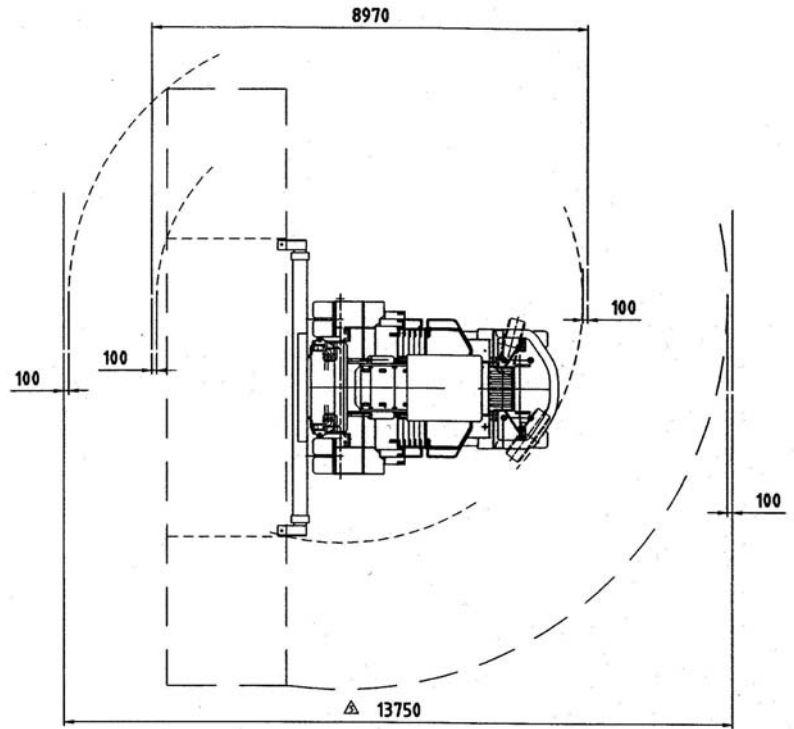
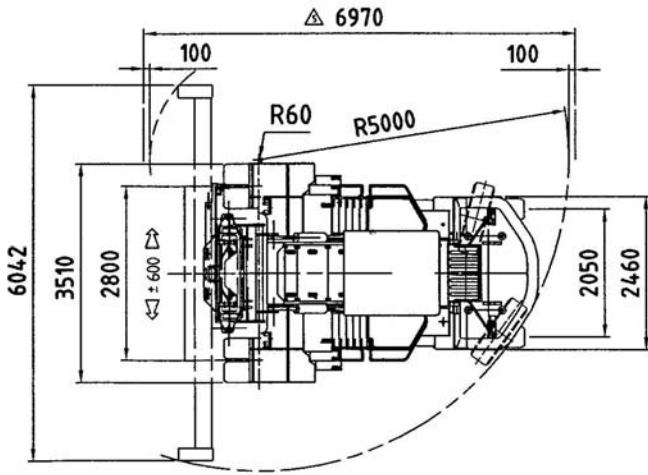
Empty Container Handling

CVS FERRARI
F 18EC

SPECIFICATION	01 Manufacturer				CVSFERRARI	CVSFERRARI	CVSFERRARI	
	02 Model				F 18 EC4	F 18 EC5	F 18 EC6	
	03 Lifting capacity			Kg.	8000			
	04 Load Centre		L 4	mm.	1240			
	05 Power unit				Diesel Engine			
	06 Steering				Steering wheel in Cab			
	07 Tyre type	Front / Rear			Pneumatic			
	08 Wheels	Number at Front/Rear (*=driven)			4* / 2			
DIMENSIONS	09 Lift, duplex mast	Standard	H 4	mm.	8700	11300	13900	
	12 Forks	Thickness	H 1	mm.	N/a			
		Width	B 1	mm.	N/a			
		Length (standard)	L 1	mm.	N/a			
	13 Distance between forks	Minimum/Maximum	V	mm.	N/a			
	14 Side shifter	Max + - R-L	V 1	mm.	+/- 600			
	15 Mast tilt angle	Forward/Backward	°/°		3/5			
	16 Overall dimensions	Length including spreader	L	mm.	5675			
		Width	B	mm.	3510			
	18	Mast height, min.	H 3	mm.	6365	7665	8965	
	19	Mast height, max	H 5	mm.	10715	13315	15915	
	20	Height	H 6	mm.	4035			
	21	Seat height	H 7	mm.	3020			
	22 Turning radius	Inner/Outer	R 1/ 2	mm.	60/5000			
23 Distance from front axle	centre to load	L 2	mm.	1140				
24 Aisle for 90° stacking	Incl. 200 mm. safety margin (40' cont)	A 1	mm.	13750				
PERFORMANCE	25 Stability	ISO 1074 (Yes/No)			YES			
	26 Speeds	Travelling F. & R. Laden/Unladen		km/h	22/25			
	27	Lifting Laden/Unladen		m/s	0.37			
	28	Lowering Laden/Unladen		m/s	0.46			
	29 Drawbar pull	Max - Laden		kN	141			
	30 Gradeability	Cont. at 2 Km/h - Laden		%	27			
Max at 0 km /h - Laden			%	33				
WHEIGHTS	32 Gross vehicle weight			Kg.	33.800	34.600	35.300	
	33 Axle load - Front	Laden		Kg.	32.300	33.200	34.000	
		Unladen		Kg.	19.200	20.100	20.900	
	34 Axle load - Rear	Laden		Kg.	9.500	9.400	9.300	
Unladen			Kg.	14.600	14.500	14.400		
TYRES BRAKES CHASSIS	35 Tyres	Number - Front/rear			4/2			
	36	Size - Front		ins.	12.00-20 (*)			
	37	Size - Rear		ins.	12.00-20			
	38 Wheelbase		L 3	mm.	3700			
	39 Track	Between centres - driven wheels		mm.	2800			
	40 Ground clearance	Under the mast		mm.	225			
		Mid-way along the wheelbase		mm.	220			
	42 Foot brake system	Type/brake wheels			Multiple wet disk brake			
43 Parking brake	Type/brake wheels			Spring brake/ driven wheels				
STEERING SYSTEM	44 Type				Hydrostatic			
DRIVING SYSTEM	45 Engine	Manufacturer - Type			CUMMINS QSB 6.7**			
	46	Rating		kW/(hp)	142 (193)			
	47	Rated Speed		RPM	2200			
	48	Peak torque		Nm/rpm	931 / 1400			
	49	Number Cylinders - swept volume		cm3	6 - 6700 cm3			
	50	Compression Ratio			17.1:1			
	51	Fuel Consumption (Average)		l/h	12-15			
	52 Alternator	Type - Rating		A	AC - 90			
	53 Starting Batteries	Voltage - Capacity		V/Ah	2x12V / 120			
	54 Drive Axle	Type			With double reduction			
	55 Gear Box	Type-number of gears forward/rev.			ZF 3 WG 171 / 3 - 3			
	56 Clutch	Clutch type			Torque converter			
		57 Hydraulic pressure	For attachments		Bar	140		
		58 Sound Level	Inside Cabine (EN 12053)		dB(A)	75		

* Alternatively 12.00 24 tyres may be installed ** Euromot step 3-EPA/CARB tier 3





* The steps on the right hand side of the operator are option

CHASSIS

All welded box type. Torsion resistant structure. Low centre of gravity.

ENGINE

Cummins QSB 6.7 common rail.

Lowest fuel consumption, and best performances. Euromot step 3

TRANSMISSION

ZF 3WG 171.

Power-shift with integrated torque converter . 3 Speeds Forward and 3 Speeds Reverse.

FRONT AXLE

Extra wide heavy duty type. Hub reduction. Wet disc brakes. Oil cooling.

REAR AXLE

Articulating axle with double acting single cylinder. Full hydrostatic steering system (Orbitrol).

HYDRAULIC SYSTEM

Powerful and reliable. Variable displacement pumps with loadsensing distributor electro-hydraulic type to reduce fuel consumption and emissions. Multifunctional joystick to control mast and spreader movements smoothly and efficiently.

ELECTRICAL SYSTEM

The most reliable and easy to service. 24 V. - Two 12 V. batteries of low maintenance type. High performance alternator.

MAST

High torsion. High quality steel. Free visibility. Heavy duty bearings. Lift cylinders hoses and chains located on the blind angles.

SIDE SPREADER

High quality steel. Compact and precise.

Telescoping from 20' to 40'. All functions controlled from cab. Side mechanical tilting. Safety sensors on two corners.

The illustrations and data contained in this brochure are not binding. The manufacturer reserves the right to make changes for any reason while not altering the primary specifications



Distributed & Serviced by: