



FERRARI



Technical Information

Fork Lift Trucks

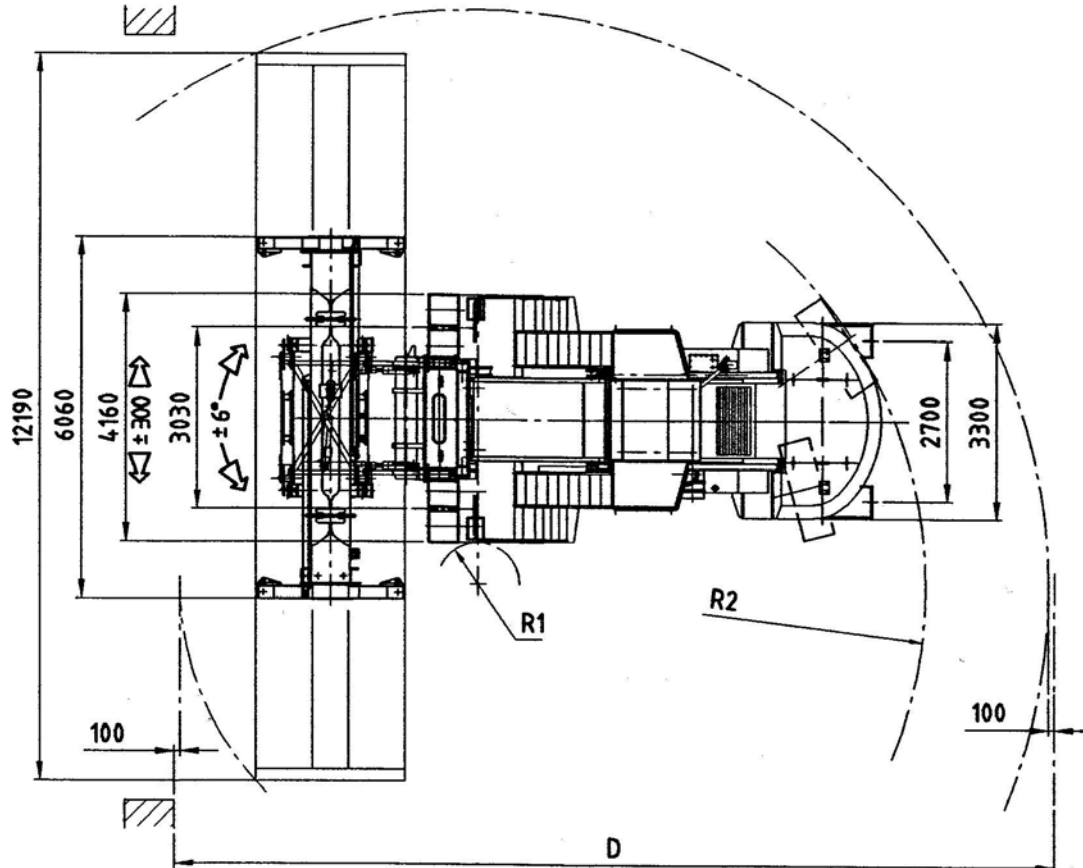
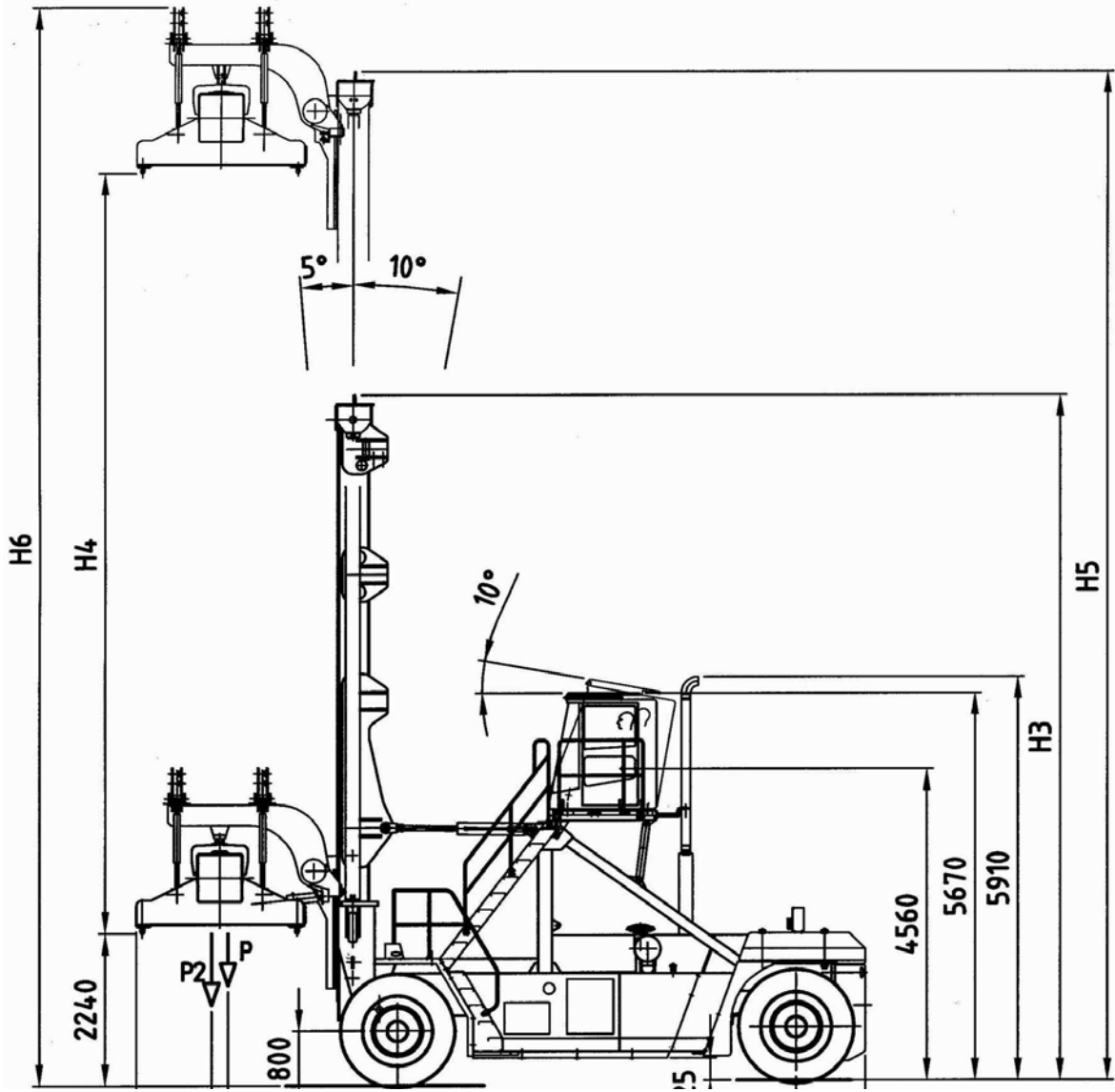
CVS FERRARI

F 42G4 – F 42G5

F 45G4 – F 45G5 – F 45G6

| SPECIFICATION | 01 Manufacturer | | | | CVS FERRARI | CVS FERRARI |
|---------------|-----------------------|---------------------------------|---------------------|-----------------|------------------|---------------|
| | 02 Model | | | | F 42 G4 | F 42 G5 |
| DIMENSIONS | 03 Lifting capacity | | | kg | 36000 | 36000 |
| | 04 Load Centre | From center of front axle | P1 | mm | 2600 | 2600 |
| | 14 Overall dimensions | Length with spreader | L | mm | 10115 | 10115 |
| | 15 | Width | | mm | 4160 | 4160 |
| | 16 | Mast height, min. | H 3 | mm | 8650 | 10050 |
| | 17 | Mast height, max | H 6 | mm | 13650 | 16450 |
| | 18 | Height, max | H 5 | mm | 14440 | 17240 |
| | 19 | Height | | mm | 5670 | 5670 |
| | 20 | Seat height | | mm | 4560 | 4560 |
| | 21 | Min. dist. spreader from ground | | mm | 2240 | 2240 |
| | DRIVING SYSTEM | 43 Engine | Manufacturer - Type | | | CUMMINS QSM11 |
| 44 | | Rating | | kW/(hp) | 250/(320) | 250/(320) |
| 45 | | Rated Speed | | RPM | 1400-2100 | 1400-2100 |
| 46 | | Peak Torque - at engine speed | | Nm/min | 1600/1400 | 1600/1400 |
| 47 | | Number Cylinders - swept volume | | cm ³ | 6/10820 | 6/10820 |
| 53 Clutch | | Clutch type | | | Torque converter | |
| | 54 Hydraulic pressure | For attachments | | bar | 140 | 140 |
| | 55 Sound Level | Inside Cabine (DIN45635) | | dB(A) | 75 | 75 |

| SPECIFICATION | 01 Manufacturer | | | | CVS FERRARI | CVS FERRARI | CVS FERRARI |
|---------------|-----------------------|---------------------------------|---------------------|-----------------|------------------|---------------|--|
| | 02 Model | | | | F 45 G4 | F 45 G5 | F 45 G6 |
| DIMENSIONS | 03 Lifting capacity | | | kg | 40000 | 40000 | 40000kg upto H4=12800 mm 38000kg over H4=12800 mm |
| | 04 Load Centre | From center of front axle | P1 | mm | 2600 | 2600 | 2600 |
| | 14 Overall dimensions | Length | L | mm | 10615 | 10615 | 10615 |
| | 15 | Width | | mm | 4160 | 4160 | 4160 |
| | 16 | Mast height, min. | H 3 | mm | 8650 | 10050 | 10600 |
| | 17 | Mast height, max | H 5 | mm | 13650 | 16450 | 17550 |
| | 18 | Height, max | H 6 | mm | 14440 | 17240 | 18340 |
| | 19 | Height | | mm | 5670 | 5670 | 5670 |
| | 20 | Seat height | | mm | 4560 | 4560 | 4560 |
| | 21 | Min. dist. spreader from ground | | mm | 2240 | 2240 | 2240 |
| | DRIVING SYSTEM | 43 Engine | Manufacturer - Type | | | CUMMINS QSM11 | |
| 44 | | Rating | | kW/(hp) | 250/(320) | 250/(320) | 250/(320) |
| 45 | | Rated Speed | | RPM | 1400-2100 | 1400-2100 | 1400-2100 |
| 46 | | Peak Torque - at engine speed | | Nm/min | 1600/1400 | 1600/1400 | 1600/1400 |
| 47 | | Nr. Cylinders - swept volume | | cm ³ | 6/10820 | 6/10820 | 6/10820 |
| 53 Clutch | | Clutch type | | | Torque converter | | |
| | 54 Hydraulic pressure | For attachments | | bar | 140 | 140 | 140 |
| | 55 Sound Level | Inside cabin | | | EN12053 | EN12053 | EN12053 |



CHASSIS

All welded box type. Torsion resistant structure. Low center of gravity.

ENGINE

CUMMINS QSM11.

Euro mot step 3. Best performances and lowest fuel consumption. Low polluting level.

TRANSMISSION

CLARK 36000

Integrated torque converter and power shift - 4 Speeds forward and 4 speeds reverse

FRONT AXLE

Extra wide front axle for maximum stability. Hub reduction. Wet disc brakes. Oil cooling. Extra heavy duty type.

REAR AXLE

Articulating axle with double acting single cylinder. Full hydrostatic steering system (Orbitrol).

HYDRAULIC SYSTEM

Powerful. Reliable. 2 variable displacement pumps with load sensing system controlling: lifting, tilting, steering, forks positioning and side shifting. Joy stick for mast and spreader control.

ELECTRICAL SYSTEM

The most reliable and easy to service. 24 V. - Two 12 V. batteries of low maintenance type. High performance alternator. Electric/electronic control of the machine based on CAN BUS technology.

MAST

High torsion. High quality steel. Free visibility. Heavy duty bearings. Lift cylinders hoses and chains located on the blind angles.

SPREADER:

High quality steel, highest strength. Compact and precise. Telescoping from 20' to 40'. All functions controlled from cab. Side mechanical tilting. Safety sensors on four corners. Gantry-spreader system.

The illustrations and data contained in this brochure are not binding. The manufacturer reserves the right to make changes for any reason while not altering the primary specifications



Distributed & Serviced by: