



# Technical Information

---

## Reach Stackers

**CVS FERRARI**

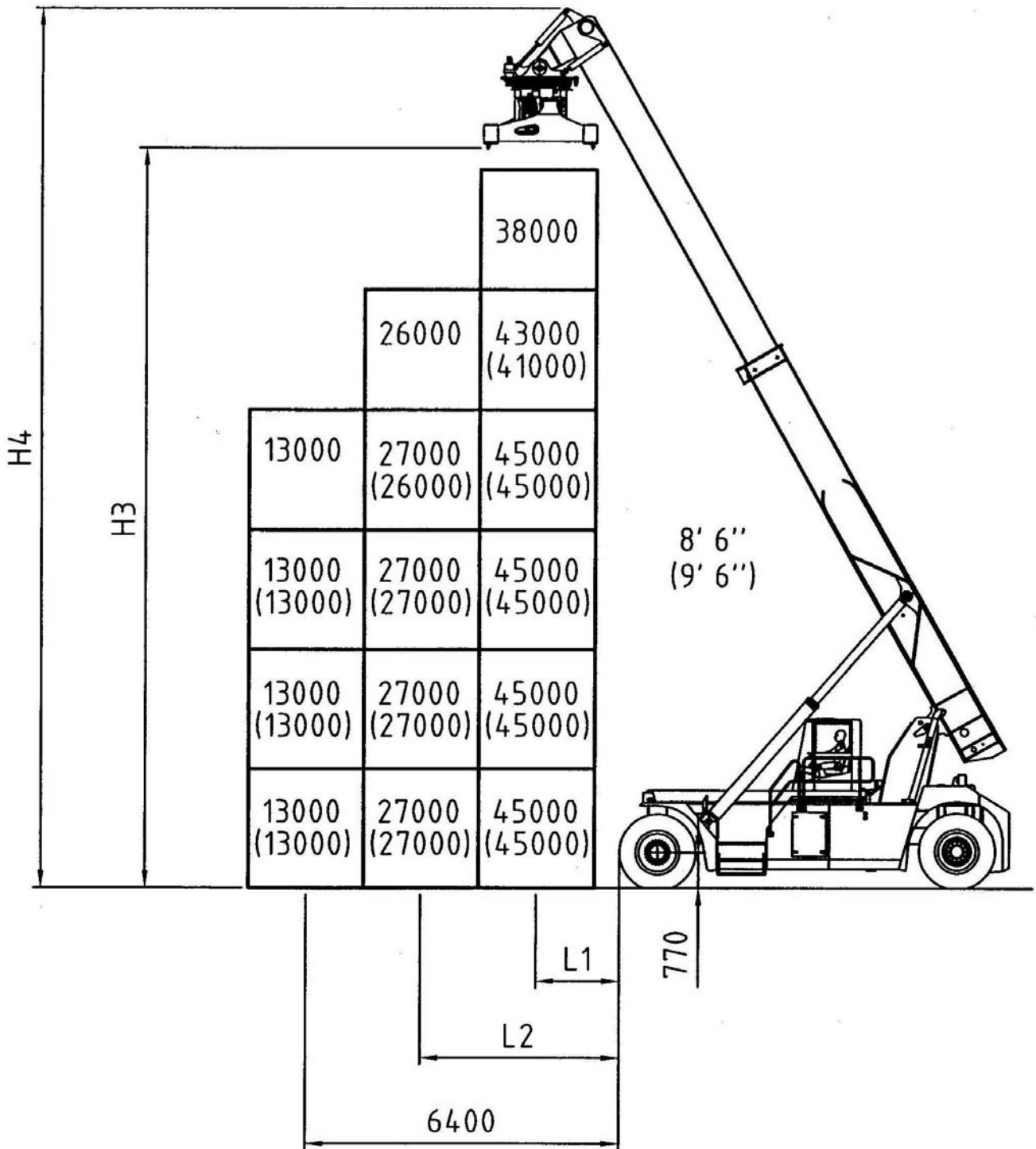
**F 465**

<b>SPECIFICATION</b>	<b>01 Manufacturer</b>				CVS FERRARI	CVS FERRARI
	<b>02 Model</b>				<b>F 465</b>	<b>F 465 PB</b>
	<b>03 Lifting capacity</b>	First Row/Second Row		Kg.	45000/27000	45000/22000
	<b>03 Lifting capacity</b>	under spreader + Piggy Back		Kg.	45000	45000
	<b>04 Load Center</b>	First Row/Second Row	L1/L2	mm.	1780/3850	1780/3850
	<b>05 Power unit</b>				Diesel engine	Diesel engine
	<b>06 Steering</b>				Steering wheel in the cab	Steering wheel in the cab
	<b>07 Tyre type</b>	Front / Rear			Pneumatic	Pneumatic
<b>08 Wheels</b>	Number at Front/Rear (*=driven)			4*/2	4* / 2	
<b>DIMENSIONS</b>	<b>09 Lifting Height</b>	Under Spreader - First Row	H3	mm.	16020	15630
	<b>10 Width of Spreader</b>	20 Ft.		mm.	6052	6052
		40 Ft.		mm.	12148	12148
	<b>11 Side Tilting</b>			Deg.	± 3 mechanical	± 4 hydraulical
	<b>12 Rotation</b>	Hydraulical		Deg.	-95+185	-95 + 185
	<b>13 Side shifter</b>	Max		mm.	±800	± 800
	<b>14 Boom Angle</b>	Min / Max		Deg.	0 / 59	0 / 59
	<b>15 Overall dimensions</b>	Length without boom		mm.	8460	8460
		Length with spreader	L	mm	11990	12015
	<b>16</b>	Width	B	mm.	4184	4184
	<b>17</b>	Boom height, Min.	H1	mm.	4810	4810
<b>18</b>	Boom height, Max	H4	mm.	19100	19100	
<b>19</b>	Height - Top of Cab	H5	mm.	3784	3784	
<b>20</b>	Seat height	H	mm.	2680	2680	
<b>21 Turning radius</b>	Inner/Outer	R2/R1	mm.	980 / 8390	980 / 8390	
<b>22 Aisle for 90° stacking</b>	Incl. 200 mm. safety margin 20' 40'		mm.	9810 / 12710	9810 / 12710	
<b>PERFORMANCE</b>	<b>Stability (static)</b>			EN 1459	En 1459	
	<b>23 Speeds</b>	Travelling F. & R. Laden/Unladen		km/h	20,8 / 22,7	20,8 / 22,7
	<b>24</b>	Lifting : max / zero load (with booster*)	m/s	M/s	0,25 / 0,34 (0,42)	0,25 / 0,34 (0,42)
	<b>25</b>	Lowering Laden/Unladen		M/s	0,27 / 0,34	0,27 / 0,34
	<b>26 Drawbar pull</b>	Max - Laden		kN	337,97	337,97
	<b>27 Gradeability</b>	Max at 0 km /h - Laden		%	26,8	26,8
<b>WEIGHTS</b>	<b>28 Gross vehicle weight</b>			Kg.	65300	71400
	<b>29 Axle load - Front</b>	Unladen		Kg.	34500	43000
		Laden		Kg.	97600	106100
	<b>30 Axle load - Rear</b>	Unladen		Kg.	30800	28400
Laden			Kg.	12700	10300	
<b>TYRES BRAKES CHASSIS</b>	<b>31 Tyres</b>	Number - Front/rear			4/2	4 / 2
	<b>32</b>	Size - Front		ins.	18.00-25 (40pr)	18.00-25 (40 pr)
	<b>33</b>	Size - Rear		ins.	18.00-25 (40pr)	18.00-25 (40 pr)
	<b>34 Wheelbase</b>		L3	mm.	6500	6500
	<b>35 Track Front</b>	Between centres - driven wheels		mm.	3033	3033
	<b>36 Track Rear</b>	Between centres - steering wheels		mm.	2820	2820
	<b>37 Ground clearance</b>	Mid-way along the wheelbase		mm.	320	320
	<b>38 Foot brake system</b>	Type/brake wheels			Wet disc brake / Driven Wheel	
	<b>39 Parking brake</b>	Type/brake wheels			Spring brakes / Driven wheel	
<b>STEERING SYSTEM</b>	<b>Type</b>				Hydrostatic	
<b>DRIVING SYSTEM</b>	<b>40 Engine</b>	Manufacturer - Type			SCANIA DC1258**	
<b>SYSTEM</b>	<b>41</b>	Rating - DIN 6271		kW/(hp)	257	257
	<b>42</b>	Rated Speed		RPM	2100	2100
	<b>43</b>	Peak Torque - at engine speed		Nm/RPM	1544 / 1200	1544 / 1200
	<b>44</b>	Number Cylinders - swept volume		cm3	6 / 11700	6 / 11700
	<b>45</b>	Compression Ratio			18:1	18:1
	<b>46</b>	Fuel Consumption (Average)		l/h	12 – 15	12 – 15
	<b>47 Alternator</b>	Type - Rating		A	130 A (2 X 65 A)	130 A (2 X 65 A)
	<b>48 Starting Batteries</b>	Voltage - Capacity		V/Ah	2x12 V –200 Ah	2x12 V –200 Ah
	<b>49 Drive Axle</b>	Type			With double reduction	
	<b>50 Gear Box</b>	Type-number of gears forwar/rev.			Clark - 4/4	Clark - 4/4
	<b>51 Clutch</b>	Clutch type			Torque converter	
	<b>52 Hydraulic pressure</b>	For attachments		Bar	140	140
	<b>53 Sound Level</b>	Inside Cabine – According to			EN 12053	EN 12053

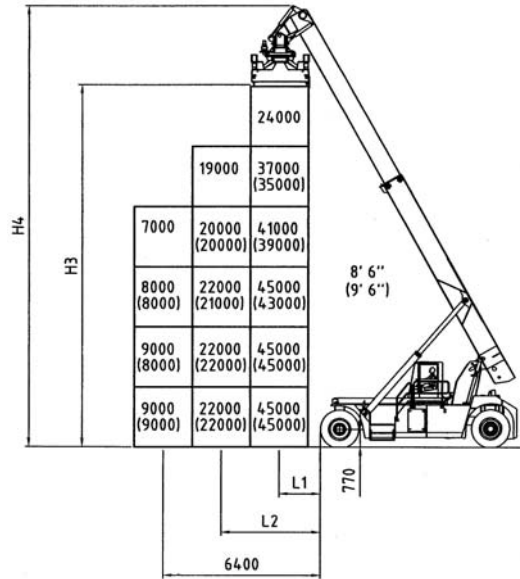
\* Booster option

\*\* Optional engines: CUMMINS QSM11 (250 kW)

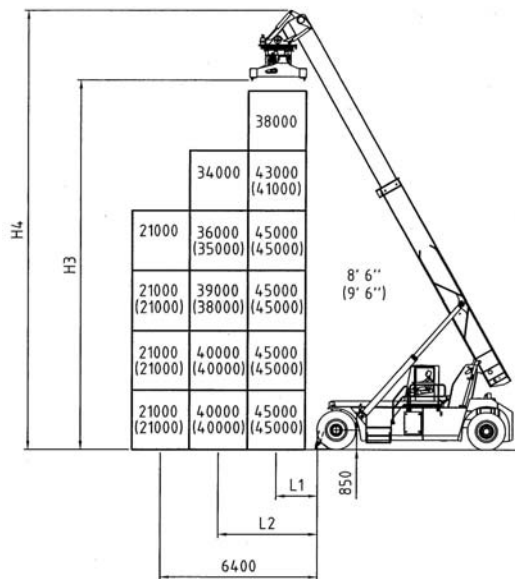
# Ferrari mod. F 465



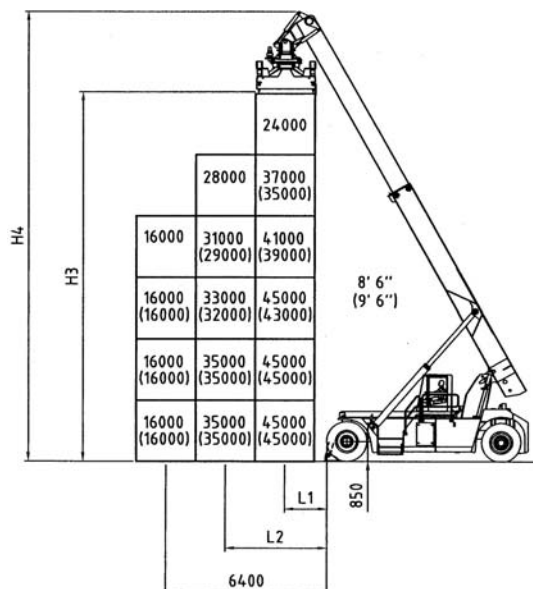
## Ferrari mod. F 465PB (with Piggy Back)

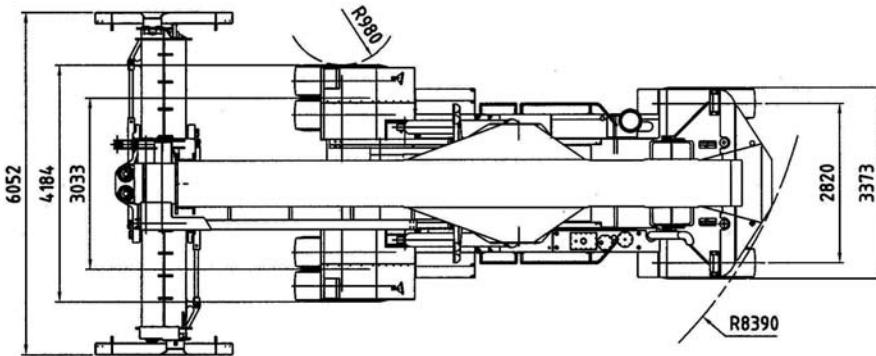
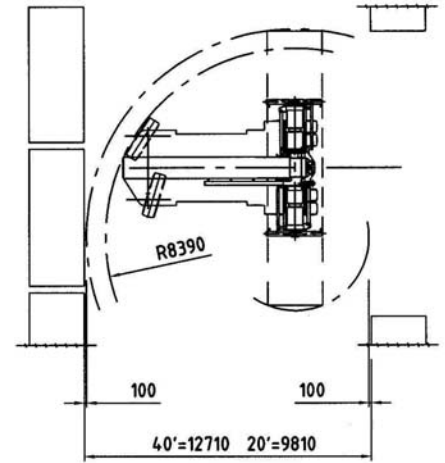
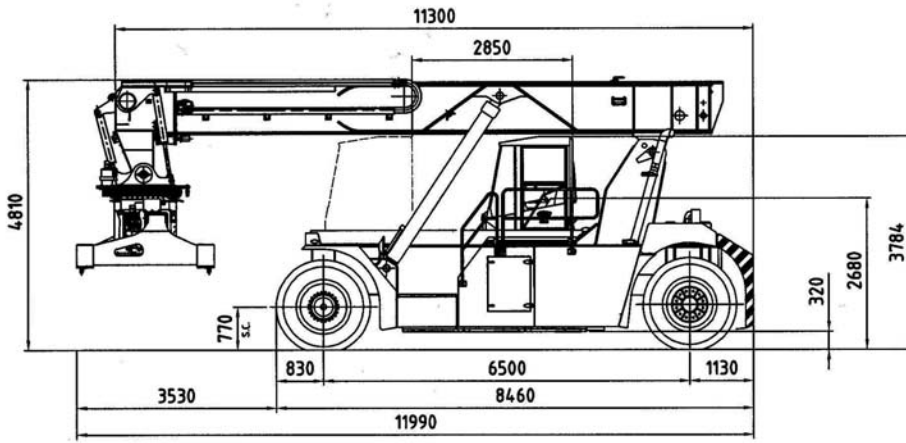


## Ferrari mod. F 465 S (with stabilizers down)



## Ferrari mod. F 465 PBS (with Piggy Back and stabilizers down)





**CHASSIS**

All welded box type. Torsion resistant structure. Low center of gravity.

**ENGINE**

SCANIA DC12  
Euro mot step 3. Best performances and lowest fuel consumption. Low polluting level.

**TRANSMISSION**

CLARK TE 32 - Integrated torque converter and power shift - 4 Speeds forward and 4 speeds reverse.

**FRONT AXLE**

Extra wide front axle for maximum stability. Hub reduction. Wet disc brake. Oil cooling. Extra heavy duty type.

**REAR AXLE**

Articulating axle with double acting single cylinder. Rubber shock absorbers. Full hydrostatic steering system (Orbitrol) with priority valve.

**HYDRAULIC SYSTEM**

Variable displacement pumps. Load sensing proportional distributor controlling telescoping and lifting. Anti-saturation LUDV system. Electrical multifunctional joystick. Oil cooling system.

**ELECTRICAL SYSTEM**

Modular system with diagnostic capability. Reliable and easy to service. 24 V. - Two 12 V. batteries of low maintenance type. Electric/electronic control of the machine based on CAN BUS technology.

**BOOM**

High torsion - High quality steel. One basic outer section and one inner telescopic section.

**SPREADER:**

Highest strength steel. Compact and precise. Telescoping from 20' to 40'. All functions controlled from cab. Side mechanical tilting. Damping cylinders. Safety sensors on four corners.

The illustrations and data contained in this brochure are not binding. The manufacturer reserves the right to make changes for any reason while not altering the primary specifications



Distributed & Serviced by: