



# Technical Information

---

## Reach Stackers

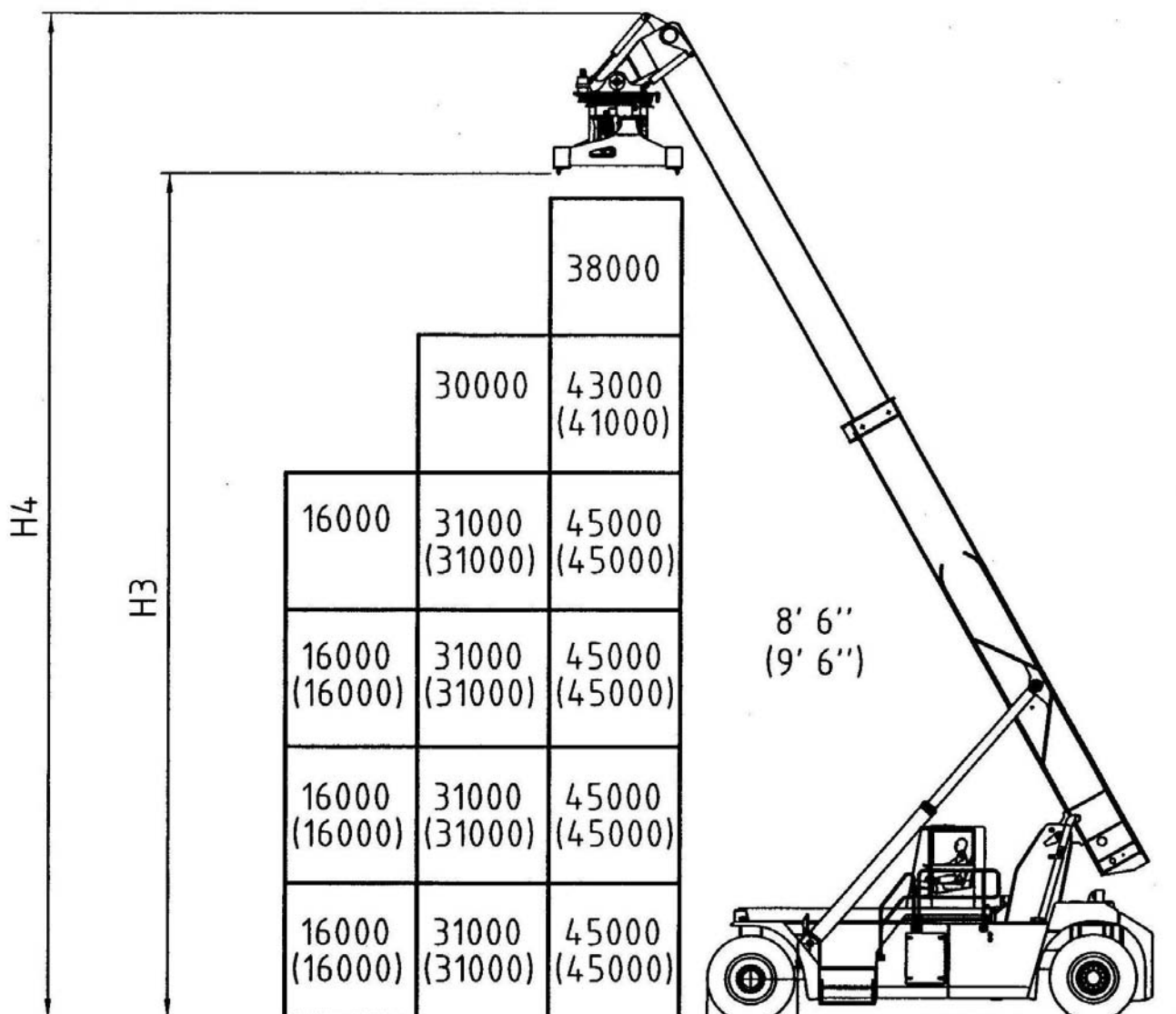
**CVS FERRARI  
F 477**

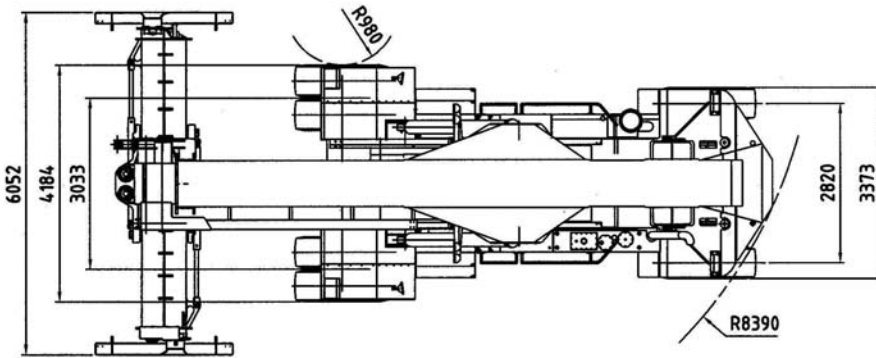
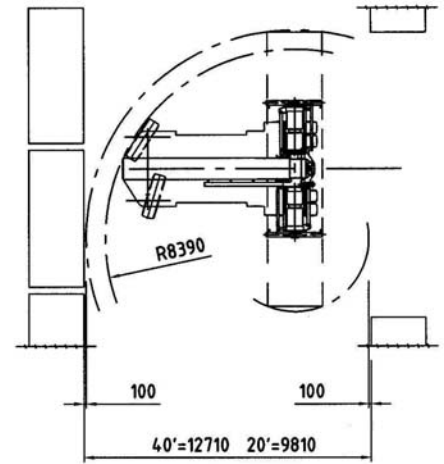
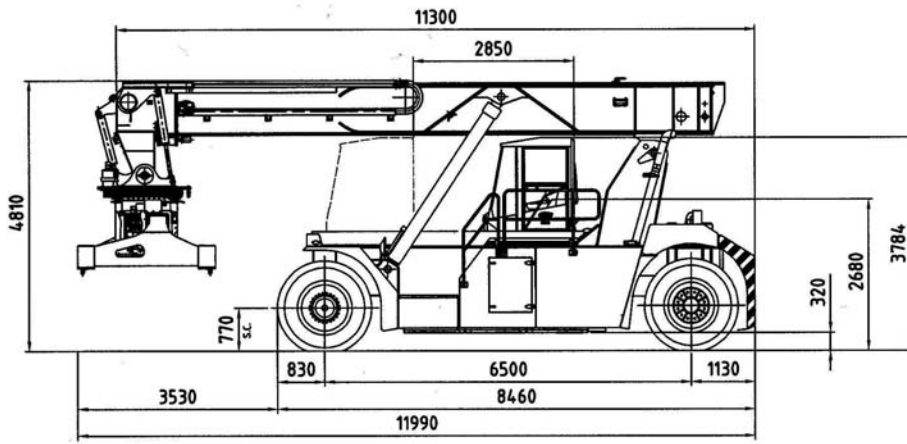
<b>SPECIFICATION</b>	<b>01 Manufacturer</b>				CVS FERRARI	
	<b>02 Model</b>				<b>F 477</b>	
	<b>03 Lifting capacity</b>	First Row/Second Row		Kg.	45000/31000	
	<b>04 Load Center</b>	First Row/Second Row	L1/L2	mm.	1780/3850	
	<b>DIMENSIONS</b>	<b>15 Overall dimensions</b>	Length without boom		mm.	8460
			Length with spreader	L	mm	11990
		<b>16</b>	Width	B	mm.	4184
		<b>17</b>	Boom height, Min.	H1	mm.	4810
		<b>18</b>	Boom height, Max	H4	mm.	19100
		<b>19</b>	Height - Top of Cab	H5	mm.	3784
<b>20</b>		Seat height	H	mm.	2680	
<b>DRIVING SYSTEM</b>		<b>40 Engine</b>	Manufacturer - Type			CUMMINS QSM11
	<b>41</b>	Rating - DIN 6271		kW	250 (335)	
	<b>42</b>	Rated Speed		RPM	2100	
	<b>43</b>	Peak Torque - at engine speed		Nm/RPM	1674 / 1000	
	<b>44</b>	Number Cylinders - swept volume		cm3	6 / 10800	
	<b>45</b>	Compression Ratio			16.3:1	
	<b>51 Clutch</b>	Clutch type			Torque converter	
	<b>52 Hydraulic pressure</b>	For attachments		Bar	140	
	<b>53 Sound Level</b>	Inside Cabine - According to			EN 12053	

\* Booster option

\*\* Optional engines: SCANIA DC1258 (257 kW)

## Ferrari mod. F 477





#### CHASSIS

All welded box type. Torsion resistant structure. Low center of gravity.

#### ENGINE

CUMMINS QSM11.  
Euromot step 3. Best performances and lowest fuel consumption. Low polluting level.

#### TRANSMISSION

CLARK TE 32 - Integrated torque converter and power shift - 4 Speeds forward and 4 speeds reverse.

#### FRONT AXLE

Extra wide front axle for maximum stability. Hub reduction. Wet disc brake. Oil cooling. Extra heavy duty type.

#### REAR AXLE

Articulating axle with double acting single cylinder. Rubber shock absorbers. Full hydrostatic steering system (Orbitrol) with priority valve.

#### HYDRAULIC SYSTEM

Variable displacement pumps. Load sensing proportional distributor controlling telescoping and lifting.  
Electrical multifunctional joystick. Oil cooling system.

#### ELECTRICAL SYSTEM

Modular system with diagnostic capability. Reliable and easy to service. 24V. - Two 12V. batteries of low maintenance type.  
Electric/electronic control of the machine based on CAN BUS technology.

#### BOOM

High torsion - High quality steel. One basic outer section and one inner telescopic section.

#### SPREADER:

Highest strength steel. Compact and precise. Telescoping from 20' to 40'. All functions controlled from cab. Side mechanical tilting.  
Damping cylinders. Safety sensors on four corners.

The illustrations and data contained in this brochure are not binding. The manufacturer reserves the right to make changes for any reason while not altering the primary specifications



Distributed & Serviced by: