



Technical Information

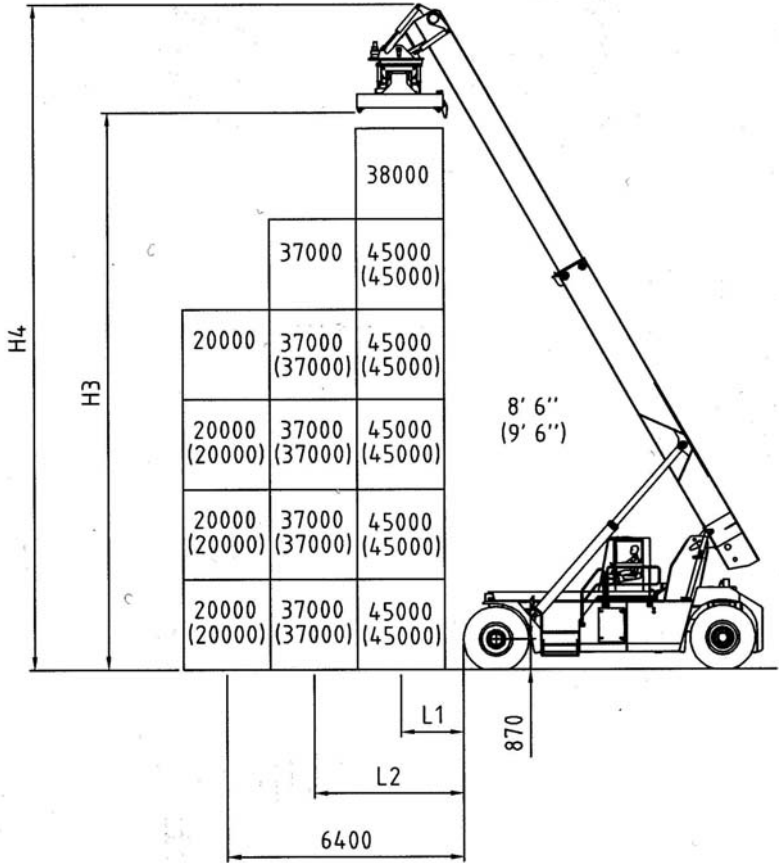
Reach Stackers

**CVS FERRARI
F 479 BH**

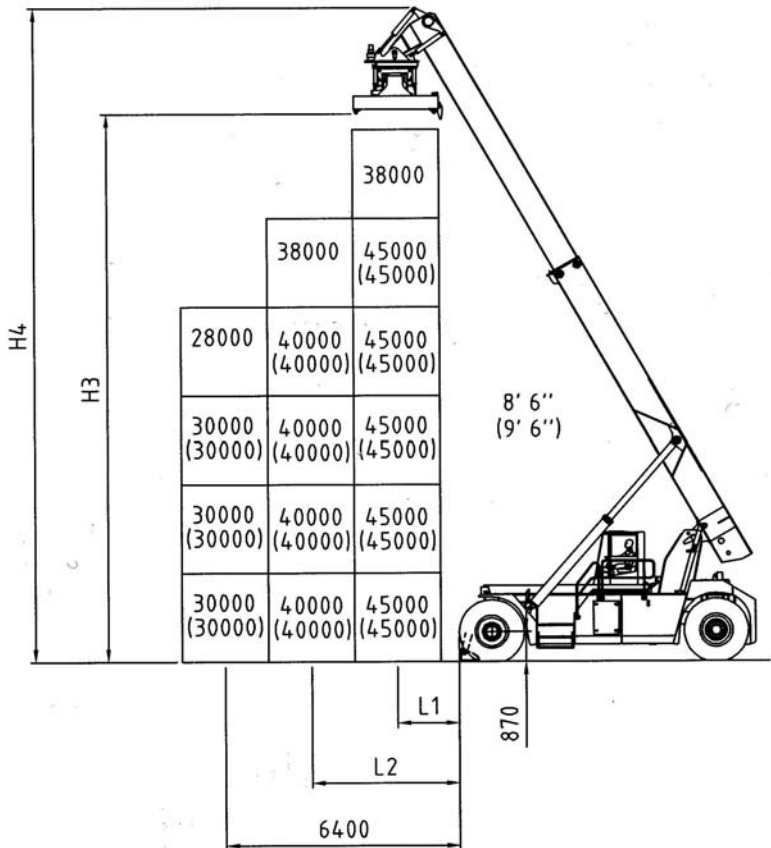
SPECIFICATION	01 Manufacturer				CVS FERRARI
	02 Model				F 479 BH
	03 Lifting capacity	First Row/Second Row on tyres		Kg.	45000/37000
	03 Lifting capacity	First Row/Second Row on stabilizers		Kg.	45000/40000
	04 Load Center	First Row/Second Row	L1/L2	mm.	1780/3850
	05 Power unit				Diesel engine
	06 Steering				Steering wheel in the cab
	07 Tyre type	Front / Rear			Pneumatic
08 Wheels	Number at Front/Rear (*=driven)			4*/2	
DIMENSIONS	09 Lifting Height	Under Spreader - First Row	H3	mm.	16060
	10 Width of Spreader	20 Ft.		mm.	6052
		40 Ft.		mm.	12148
	11 Side Tilting			Deg.	± 3 mechanical
	12 Rotation	Hydraulic		Deg.	-95+185
	13 Side shifter	Max		mm.	± 800
	14 Boom Angle	Min / Max		Deg.	0 / 59
	15 Overall dimensions	Length without boom		mm.	8560
		Length with spreader	L	mm	11990
	16	Width	B	mm.	4184
	17	Boom height, Min.	H1	mm.	4910
	18	Boom height, Max	H4	mm.	19130
	19	Height - Top of Cab	H5	mm.	3884
	20	Seat height	H	mm.	2780
21 Turning radius	Inner/Outer	R2/R1	mm.	980 / 8390	
22 Aisle for 90° stacking	Incl. 200 mm. safety margin 20' 40'		mm.	9810 / 12710	
PERFORMANCE	Stability (static)				EN 1459
	23 Speeds	Travelling F. & R. Laden/Unladen		km/h	21,3 / 24,6
	24	Lifting : max / zero load (with booster*)	m/s	M/s	0,25 / 0,34 (0,42)
	25	Lowering Laden/Unladen		M/s	0,27 / 0,34
	26 Drawbar pull	Max - Laden		kN	302,89
	27 Gradeability	Max at 0 km /h - Laden		%	22
WEIGHTS	28 Gross vehicle weight			Kg.	84000
	29 Axle load - Front	Unladen		Kg.	41000
		Laden		Kg.	104900
	30 Axle load - Rear	Unladen		Kg.	43000
		Laden		Kg.	24100
TYRES BRAKES CHASSIS	31 Tyres	Number - Front/rear			4/2
	32	Size - Front			18.00-33
	33	Size - Rear			18.00-33
	34 Wheelbase		L3	mm.	6500
	35 Track Front	Between centres - driven wheels		mm.	3033
	36 Track Rear	Between centres - steering wheels		mm.	2820
	37 Ground clearance	Mid-way along the wheelbase		mm.	420
	38 Foot brake system	Type/brake wheels			Wet disc brake / Driven Wheel
	39 Parking brake	Type/brake wheels			Spring brakes / Driven wheel
STEERING SYSTEM	Type				Hydrostatic
DRIVING SYSTEM	40 Engine	Manufacturer - Type			CUMMINS QSM11
	41	Rating - DIN 6271		kW/(hp)	250 (335)
	42	Rated Speed		RPM	2100
	43	Peak Torque - at engine speed		Nm/RPM	1674 / 1000
	44	Number Cylinders - swept volume		cm3	6 / 10800
	45	Compression Ratio			16.3:1
	46	Fuel Consumption (Average)		l/h	12 - 15
	47 Alternator	Type - Rating		A	100 A
	48 Starting Batteries	Voltage - Capacity		V/Ah	2x12 V -200 Ah
	49 Drive Axle	Type			With double reduction
	50 Gear Box	Type-number of gears forwar/rev.			Clark - 4/4
	51 Clutch	Clutch type			Torque converter
		52 Hydraulic pressure	For attachments		Bar
53 Sound Level		Inside Cabine - According to			EN 12053

* Booster option

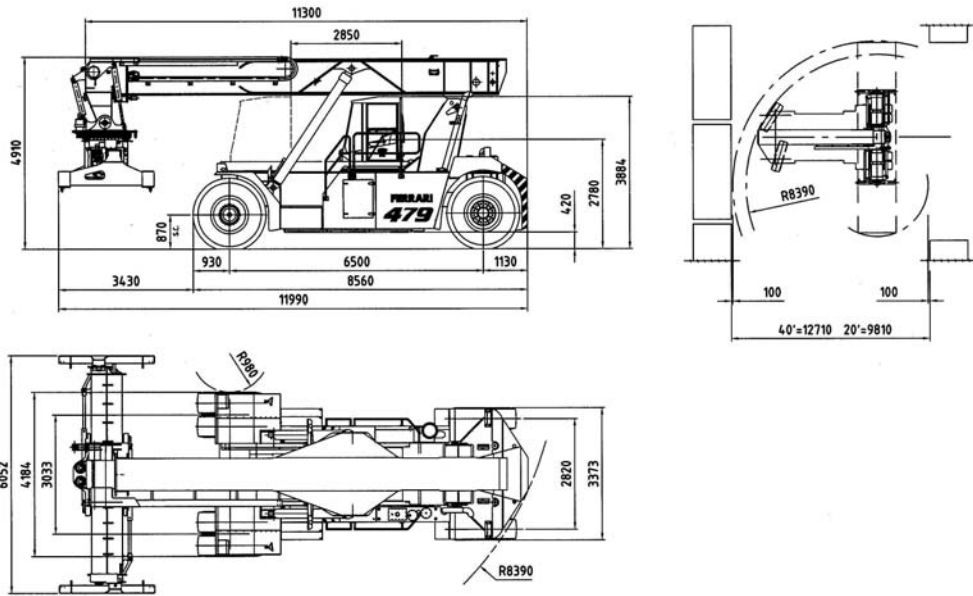
Ferrari mod. F 479BH on tyres



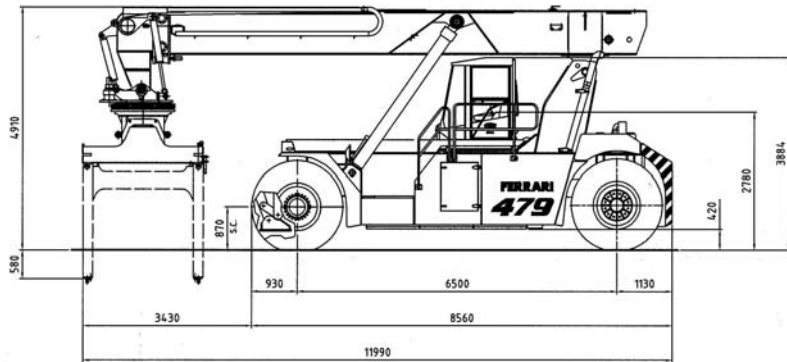
Ferrari mod. F 479BH on stabilizers



**F 479
standard**



**F 479
equipped with foldable twistlock
extension**



CHASSIS

All welded box type. Torsion resistant structure. Low center of gravity.

ENGINE

CUMMINS QSM11.

Euromot step 3. Best performances and lowest fuel consumption. Low polluting level.

TRANSMISSION

CLARK TE 32 - Integrated torque converter and power shift - 4 Speeds forward and 4 speeds reverse.

FRONT AXLE

Extra wide front axle for maximum stability. Hub reduction. Wet disc brake. Oil cooling. Extra heavy duty type.

REAR AXLE

Articulating axle with double acting single cylinder. Rubber shock absorbers. Full hydrostatic steering system (Orbitrol) with priority valve.

HYDRAULIC SYSTEM

Variable displacement pumps. Load sensing proportional distributor controlling telescoping and lifting. Anti-saturation LUDV system.

Electrical multifunctional joystick. Oil cooling system.

ELECTRICAL SYSTEM

Modular system with diagnostic capability. Reliable and easy to service. 24V. - Two 12V. batteries of low maintenance type. Electric/electronic control of the machine based on CAN BUS technology.

BOOM

High torsion - High quality steel. One basic outer section and one inner telescopic section.

SPREADER:

Highest strength steel. Compact and precise. Telescoping from 20' to 40'. All functions controlled from cab. Side mechanical tilting. Damping cylinders. Safety sensors on four corners.

The illustrations and data contained in this brochure are not binding. The manufacturer reserves the right to make changes for any reason while not altering the primary specifications



Distributed & Serviced by: