



# Technical Information

## Reach Stackers

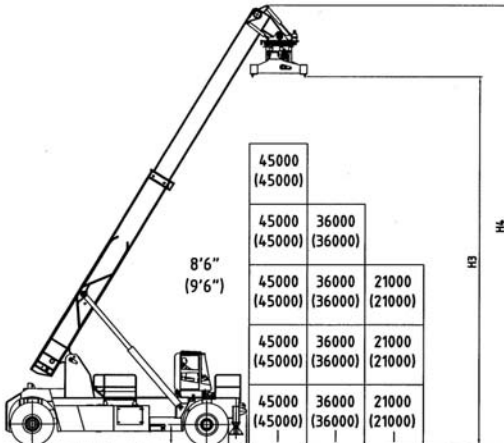
**CVS FERRARI  
F 481**

SPECIFICATION	01 Manufacturer			CVS FERRARI	CVS FERRARI	CVS FERRARI		
	02 Model			F 481	F 481 PB	F 481 BH		
DIMENSIONS	03 Lifting capacity		First Row/Second Row	Kg.	45000/36000	45000/31000	42000/32000	
	14 Overall dimensions		Length with spreader	mm.	13015	13015	13015	
	15		Width	B	mm.	4160	4160	4160
	16		Boom height, Min.	H1	mm.	4920	4920	4920
	17		Boom height, Max	H4	mm.	18900	19000	19000
	18		Height - Top of Cab	H5	mm.	3884	3884	3034 (6264 with elevat. Cab)
	19		Seat height	H	mm.	2780	2780	2900 (5214 with elevat. Cab)
DRIVING SYSTEM	40 Engine		Manufacturer - Type		CUMMINS QSM11			
	41		Rating	kW/(hp)	250 (335)	250 (335)	250 (335)	
	42		Rated Speed	RPM	2100	2100	2100	
	43		Peak Torque - at engine speed	Nm/RPM	1674 / 1400	1674 / 1400	1674 / 1400	
	44		Number Cylinders - swept volume	cm3	6 / 1080	6 / 1080	6 / 1080	
	45		Compression Ratio		16.3:1	16.3:1	16.3:1	
	51 Clutch		Clutch type		Torque converter			
52 Hydraulic pressure		For attachments	Bar	140	140	140		
53 Sound Level		Inside Cabine	dB(A)	EN 12053	EN 12053	EN 12053		

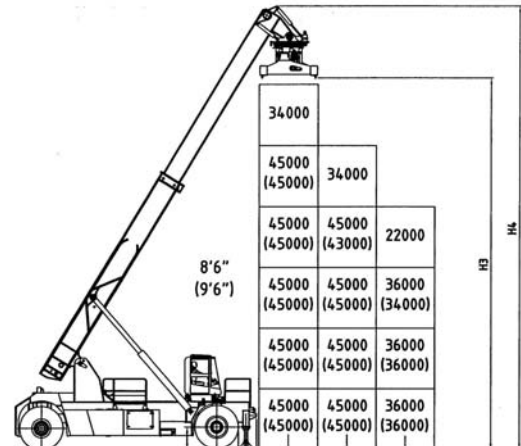
\* Booster option

## Ferrari mod. F 481

With stabilizers up

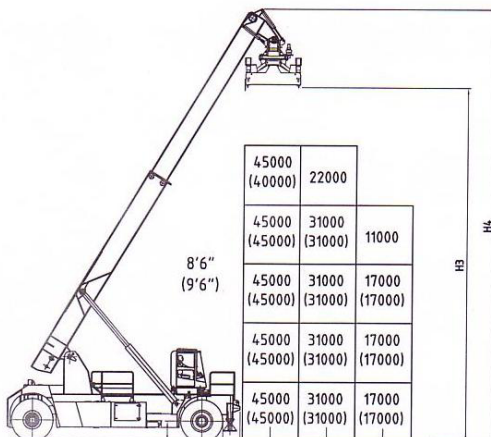


With stabilizers down

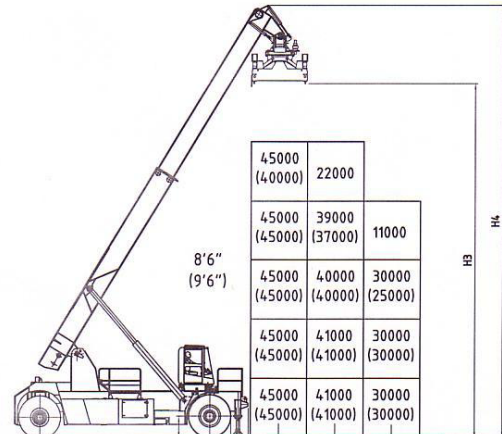


## Ferrari mod. F 481 PB

With stabilizers up



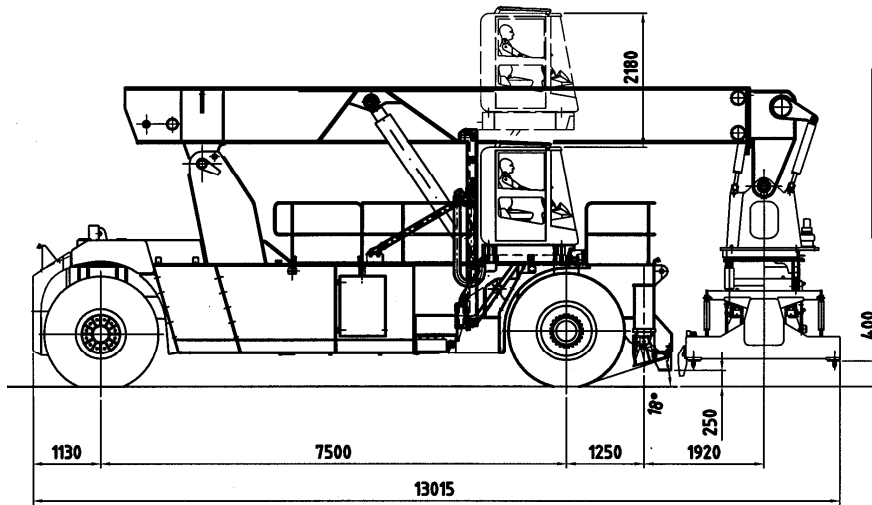
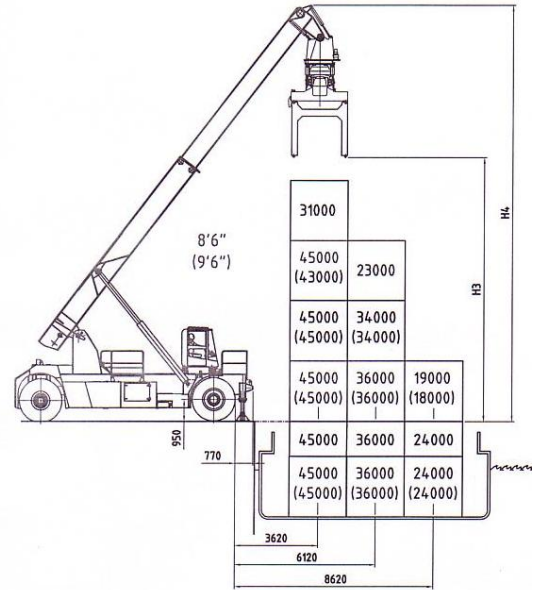
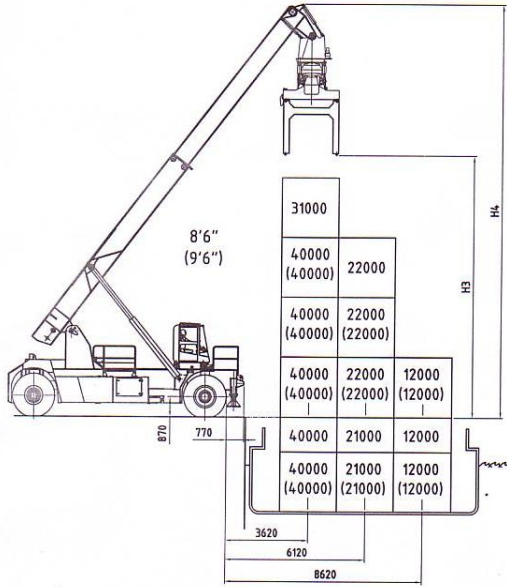
With stabilizers down



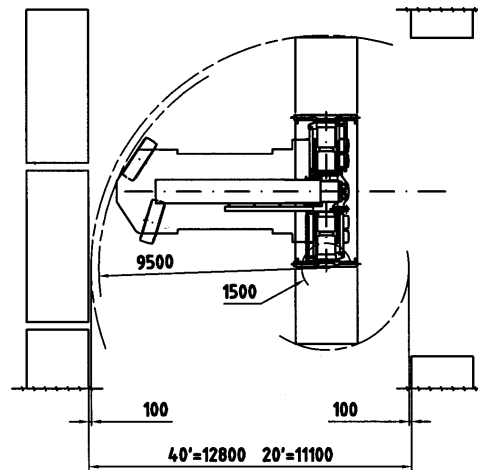
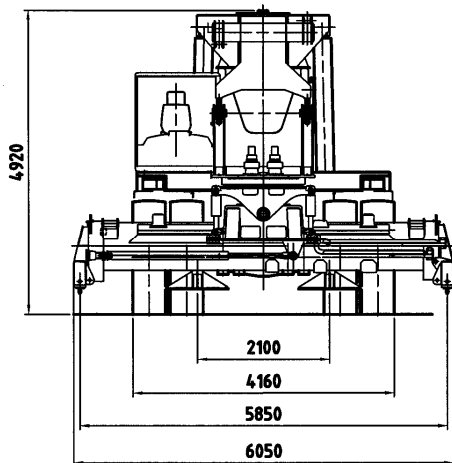
# Ferrari mod. F 481 BH

With stabilizers up

With stabilizers down



Elevating cabin located in right side position and foldable twist lock extension to handle containers on barges are optional



**CHASSIS**

All welded box type. Torsion resistant structure. Low center of gravity.

**ENGINE**

CUMMINS QSM11.

Euromot step 3. Best performances and lowest fuel consumption. Low polluting level.

**TRANSMISSION**

CLARK TE32 - Integrated torque converter and power shift - 4 Speeds forward and 4 speeds reverse.

**FRONT AXLE**

Extra wide front axle for maximum stability. Hub reduction. Wet disc brake. Oil cooling. Extra heavy duty type.

**REAR AXLE**

Articulating axle with double acting single cylinder. Rubber shock absorbers. Full hydrostatic steering system (Orbitrol) with priority valve.

**HYDRAULIC SYSTEM**

Variable displacement pumps. Load sensing proportional distributor controlling telescoping and lifting. Anti-saturation LUDV system.

Electrical multifunctional joystick. Oil cooling system.

**ELECTRICAL SYSTEM**

Modular system with diagnostic capability. Reliable and easy to service. 24V. - Two 12V. batteries of low maintenance type.

Electric/electronic control of the machine based on CAN BUS technology.

**BOOM**

High torsion - High quality steel. One basic outer section and one inner telescopic section.

**SPREADER:**

Highest strength steel. Compact and precise. Telescoping from 20' to 40'. All functions controlled from cab. Side mechanical tilting. Damping cylinder. Safety sensors on four corners.



*Distributed & Serviced by:*